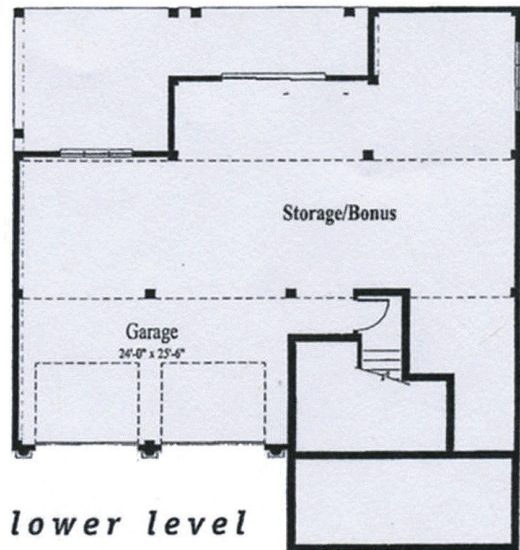
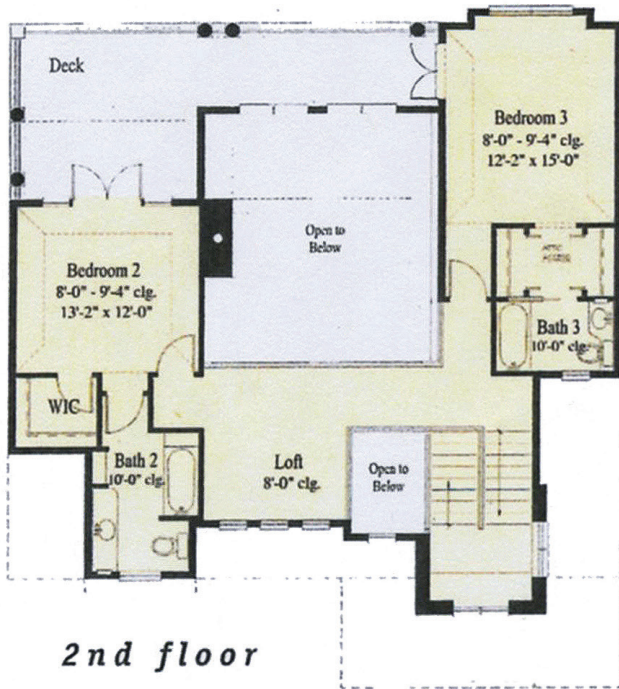


**A** cozy porch with decorative fretwork and balusters lead through a mid-level entry to the main gallery, which sports an art niche. The great room boasts a warming fireplace, built-in cabinets and two pairs of French doors that open to the rear porch.



**3 Bedroom**  
**3-1/2 Bath**  
**Width: 44'0"**  
**Depth: 49'0"**  
**Exterior Walls: 2x6**

**1st Floor: 1,510 sq ft**  
**2nd Floor: 864 sq ft**  
**Living Area: 2,374 sq ft**  
**Foundation: Island basement**



# The Sea Conch

Bamboo Homes of Florida Inc. reserves the right to change floor plans, specifications, and prices without notice. Special wall and window treatments, upgraded floor coverings, softscape and hardscape landscape, and many other items featured in and around the model homes are decorator suggested and not included in the purchase price. All renderings, floor plans and maps are artist's conception, and are not intended to be actual depiction of the buildings, fencing, walks, driveways, or landscaping. Some items shown are optional. Please see our sales representative with any questions. BAM-2607 © 2014 Bamboo Development, Inc.